

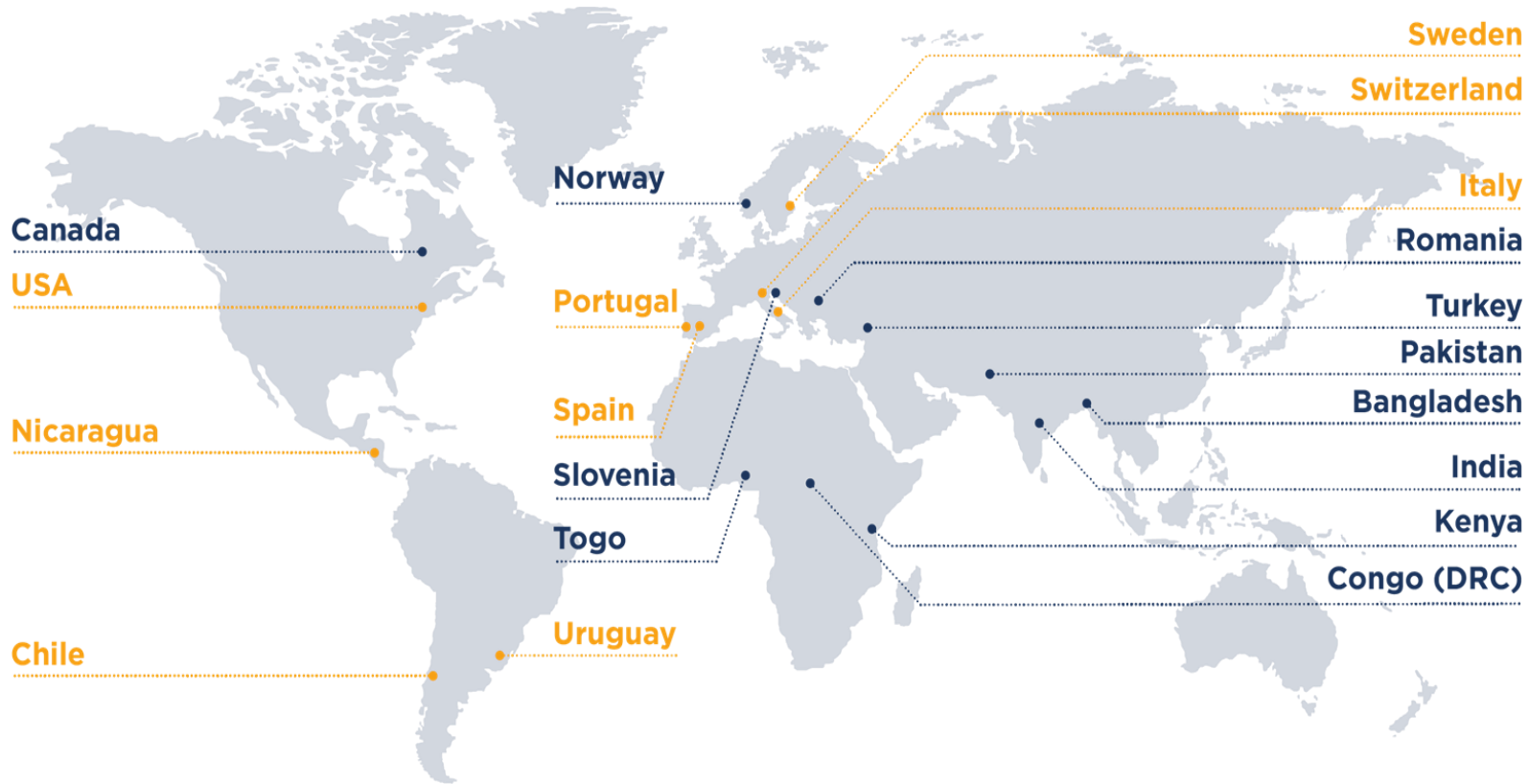
Addressing GBV: a Key Element in Gender-Sensitive Addiction Treatment Programs

PhD. Gisela Hansen





Dianova network





General Information 2020

dianova.org

25 members
from 19 countries
and 4 continents



804
employees - **55%**
women, **45%** men

587
volunteers



42 direct
care facilities



More than 100
intervention and
social integration
programmes

Social impact

83.567 direct
beneficiaries

378.556 indirect
beneficiaries



4 awareness
campaigns,
58 publications,
197 advocacy initiatives
in 12 countries

14

affiliations
to international
organizations,
federations and
networks of NGOs

Promoting gender-sensitive addiction prevention and recovery services is critical to address gender-based violence

EMPOWER WOMEN,

EMPOWER SOCIETY



dianova 



Human
Empowerment

[Watch the video](#)

AGENDA

01

General concepts

Gender-sensitive
programs in addiction
treatment

02

Gender barriers in drug recovery

Why do women enroll less than
men in addiction treatment
programs and show worse
outcomes than men?

03

Gender-based violence and drug use

How are these two phenomena
related?

04

How to build a gender-sensitive addiction treatment program

From program design to
daily practice

1

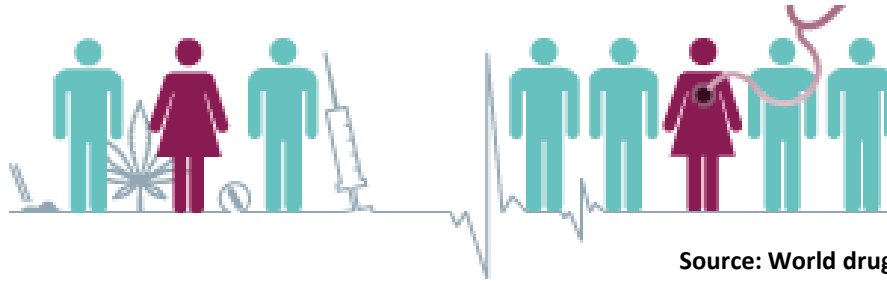
Gender-sensitive programs in addiction treatment

A gender-sensitive program in addiction treatment must:

- **Consider particularities of gender**
- **Eliminate the based-gender disadvantages**
- **Contemplate more than male-female binarism**



Gender barriers in drug recovery



Source: World drug report, 2016.

- **There are gender barriers to access to (and to complete) addiction treatment programs.**
- Invisibility and chronification of female drug use.
- **Double stigmatization: Drug user + gender stigma.**



Gender-based violence and drug use

**A higher prevalence of
violence experienced
among:**

Women drug
users than women in
general population.

Women drug users
than men drug
users.

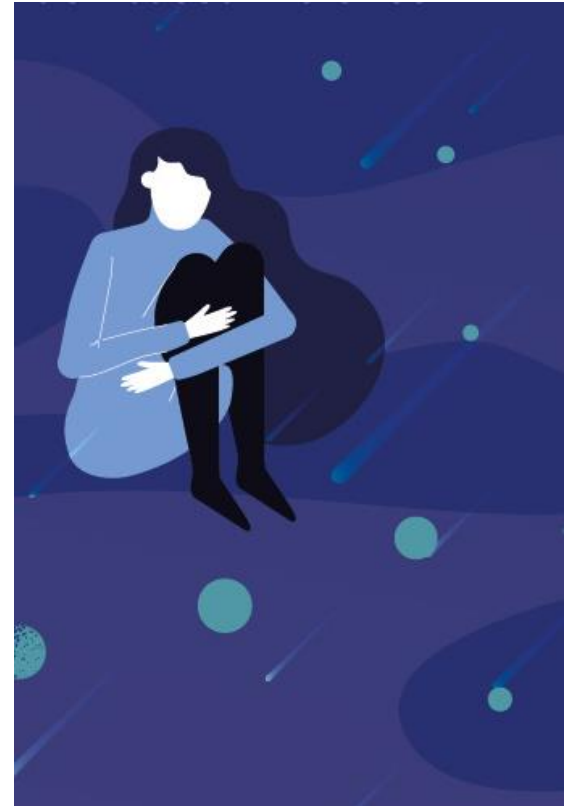
**A greater drug use
among:**

Individuals who have
experienced
violence and
trauma.

Gender-based violence and drug use

What do we know about the link between violence suffered among women who use drugs and drug use?

- Violence and trauma reported during childhood and/or adulthood.
- Sexual abuse in childhood, sexual violence in adolescence or adulthood, and domestic violence.
- 80% men in treatment: women's specific needs are diluted.



Gender-based violence and drug use

Putting the focus on violence faced by women who use drugs in addiction treatment programs is a must because...

- ❖ They face multiple types of violence.
- ❖ It is crucial to detect and address the impact that violence has had on them and their children.
- ❖ Violence and drugs generate specific and complex dynamics.



4

How to build a gender-sensitive treatment program

- **Mainstream the gender perspective.**
- Rethink traditional addiction treatment programs.
- **Replicate good practices.**
- Specific training is needed.
- **Hold support groups for women.**
- Comprehensive care.



Gender-responsive addiction treatment services and other assistance programmes for women should be considered an essential contribution for the elimination of violence against women

**EMPOWER WOMEN,
EMPOWER SOCIETY**

dianova | 



Human
Empowerment

Thank you!

Gisela.Hansen@dianova.es